



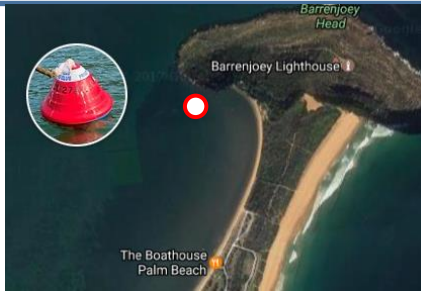
**America Bay 1 (NE shore)**

GPS: 33.35.621S 151.15.362E No. CL2747-1

**America Bay 2, 3 & 4 (South)**

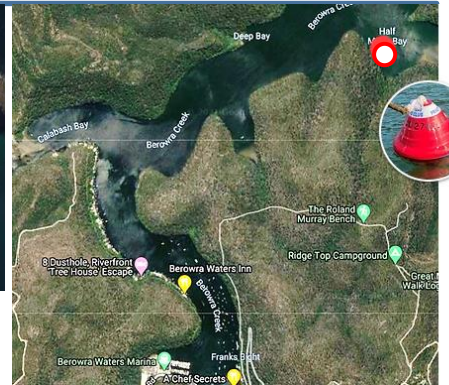
GPS: 33.35.813S 151.15.62E

Nos: CL2747-2, CL2747-3, CL2747-4



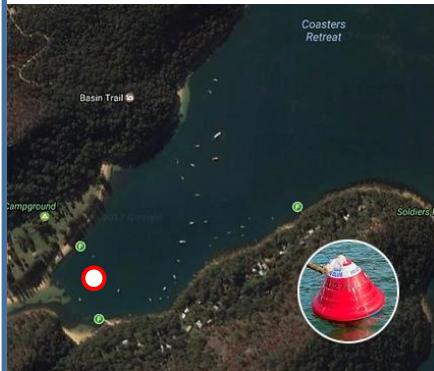
**Barrenjoey Headland**

No. CL5893



**Berrowra Waters**

(Half Moon / Joe Craft Bay)



**Coasters Retreat (The Basin)**

GPS: 33.36.288S 151.17.657E

No. CL3109



**Gosford**

GPS: 33.26.15S 151.20.25E

No. CL8181

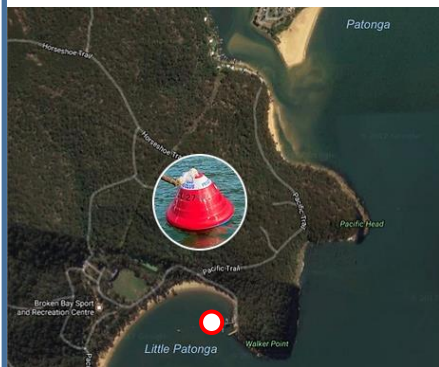


**Hardy's Bay**

GPS: 151.21.495E 33.31.315S

No. CL6304

# CLUB MOORINGS



**Little Patonga**

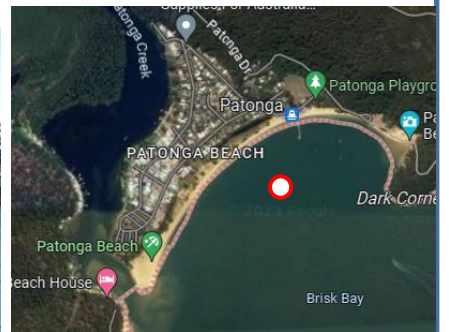
No. CL2484



**Little Lovett Bay**

GPS: 33.37.882S 151.17.114E

No. CL6360



**Patonga**



**Refuge Bay**

**1, 2 & 3**

GPS: 33.35.919S 151.14.833E

No. CL2747-1

GPS: 33.36.071S 151.15.044E

No. CL2747-2

GPS: 33.36.051S 151.15.058E

No. CL2747-3

